

Архангельск (8182)63-90-72  
 Астана (7172)727-132  
 Астрахань (8512)99-46-04  
 Барнаул (3852)73-04-60  
 Белгород (4722)40-23-64  
 Брянск (4832)59-03-52  
 Владивосток (423)249-28-31  
 Волгоград (844)278-03-48  
 Вологда (8172)26-41-59  
 Воронеж (473)204-51-73  
 Екатеринбург (343)384-55-89  
 Иваново (4932)77-34-06

Ижевск (3412)26-03-58  
 Иркутск (395)279-98-46  
 Казань (843)206-01-48  
 Калининград (4012)72-03-81  
 Калуга (4842)92-23-67  
 Кемерово (3842)65-04-62  
 Киров (8332)68-02-04  
 Краснодар (861)203-40-90  
 Красноярск (391)204-63-61  
 Курск (4712)77-13-04  
 Липецк (4742)52-20-81  
 Киргизия (996)312-96-26-47

Магнитогорск (3519)55-03-13  
 Москва (495)268-04-70  
 Мурманск (8152)59-64-93  
 Набережные Челны (8552)20-53-41  
 Нижний Новгород (831)429-08-12  
 Новокузнецк (3843)20-46-81  
 Новосибирск (383)227-86-73  
 Омск (3812)21-46-40  
 Орел (4862)44-53-42  
 Оренбург (3532)37-68-04  
 Пенза (8412)22-31-16  
 Россия (495)268-04-70

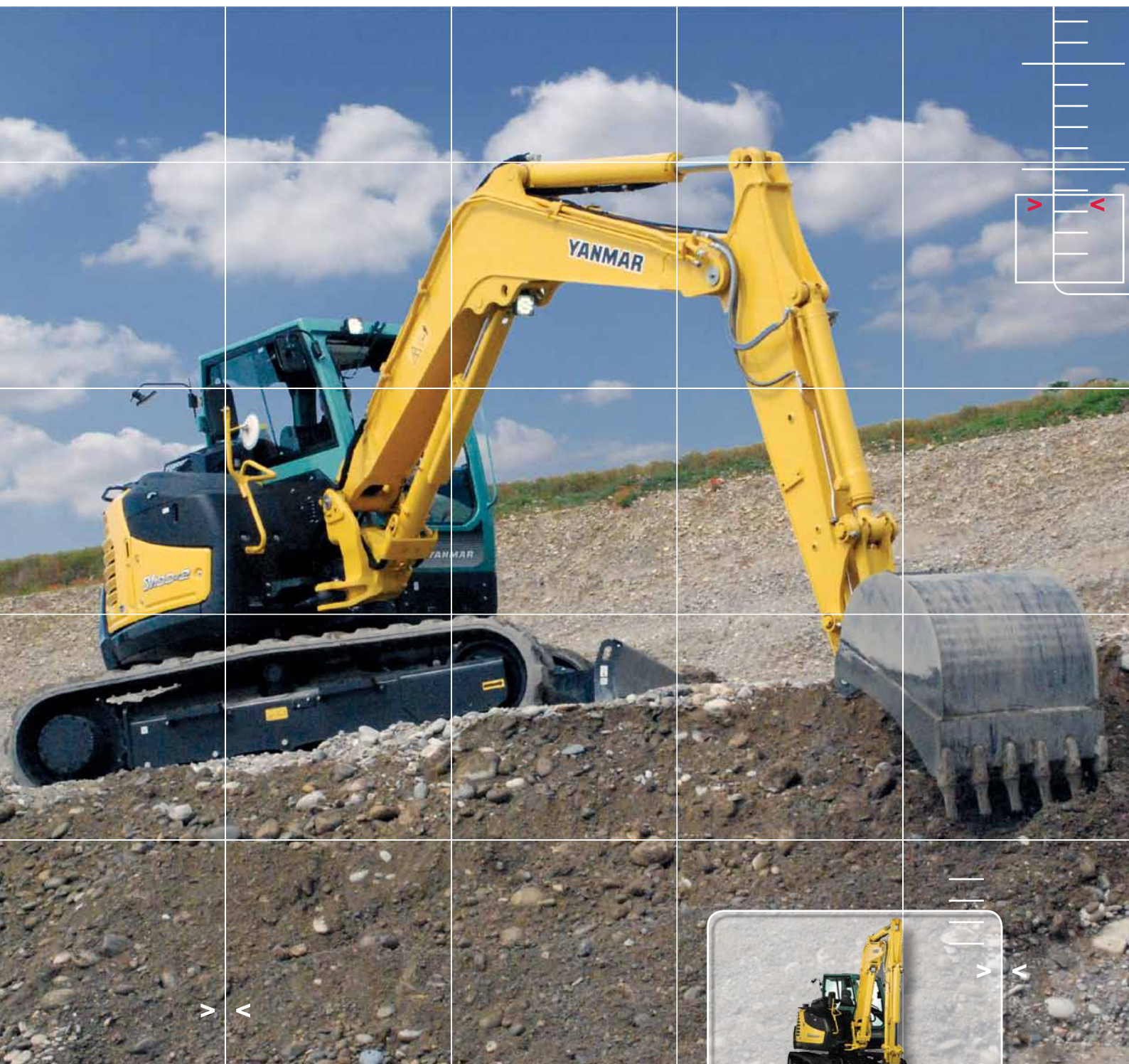
Пермь (342)205-81-47  
 Ростов-на-Дону (863)308-18-15  
 Рязань (4912)46-61-64  
 Самара (846)206-03-16  
 Санкт-Петербург (812)309-46-40  
 Саратов (845)249-38-78  
 Севастополь (8692)22-31-93  
 Симферополь (3652)67-13-56  
 Смоленск (4812)29-41-54  
 Сочи (862)225-72-31  
 Ставрополь (8652)20-65-13  
 Казахстан (772)734-952-31

Сургут (3462)77-98-35  
 Тверь (4822)63-31-35  
 Томск (3822)98-41-53  
 Тула (4872)74-02-29  
 Тюмень (3452)66-21-18  
 Ульяновск (8422)24-23-59  
 Уфа (347)229-48-12  
 Хабаровск (4212)92-98-04  
 Челябинск (351)202-03-61  
 Череповец (8202)49-02-64  
 Ярославль (4852)69-52-93

<https://yanmar.nt-rt.ru> || [yma@nt-rt.ru](mailto:yma@nt-rt.ru)

# MIDI-EXCAVATOR **SV100-2**

9625 / 10075 kg



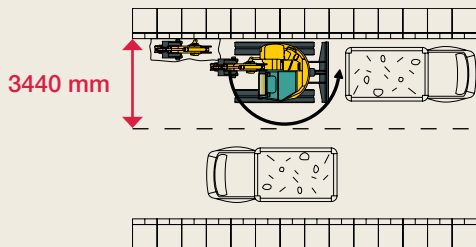
Call for Yanmar solutions



# AN UNMATCHED COMBINATION OF COMPACTNESS AND PERFORMANCE



Short tail swing of only **170 mm**



## IDEAL FOR URBAN JOBSITES

The SV100-2 is particularly suited for work in urban areas: no need to block the two lanes of traffic.



A true concentrate of technology and innovation, the SV100-2 offers the performance of a large excavator while enjoying the benefits of a compact excavator. Designed to work effectively on a wide variety of sites, it combines compactness, power, versatility, comfort and reliability.



## COMPACTNESS

### Maximum stability and exceptional lifting forces

The SV100-2 is equipped with the VICTAS® system whose strength lies in the increase of the support surface and increase in tracking through the use of asymmetric crawlers. This system, patented by Yanmar, reduces track degradation, makes displacements quieter and reduces vibration. Associated with the use of a large counterweight and excellent weight distribution, it provides the same or even higher stability than conventional machines in the same weight class, as well as remarkable lifting capacities.

### Dual axis position of the arm cylinder

When using a quick hitch, the dual position of the arm cylinder axis makes for scalable kinematics and prevents collisions with the boom while maintaining digging force.





## WORK PERFORMANCE

Based on our unique experience and expertise, Yanmar technology ensures excellent performance while respecting the environment. The SV100-2 combines power, flexibility and precision. Its versatility makes it the ideal partner to improve your productivity, regardless of the work site complexity you are facing (excavation, grading, demolition, backfilling...).

### OUTSTANDING PERFORMANCES FOR A MEDIUM EXCAVATOR OF THIS SIZE

#### Features of a large excavator in a compact format

The breakout forces of 68.5 kN at the bucket and 45.8 kN at the boom are exceptional for a 10 ton excavator with a very short tail swing. Associated with a digging depth of 4570 mm (3870 mm for vertical wall) and excellent traction force, they allow the SV100-2 to carry out major work such as laying pipes or excavation and clearing operations for large areas.

#### VIPPS® Hydraulic circuit (ViO progressive 3 pump system)

The SV100-2 is equipped with a hydraulic circuit with aggregated power regulation equipped with a double

piston pump with variable flow, a gear pump and a multiple combination directional control valve. Pumps engage automatically depending on the operation being performed, providing greater ease of use for the operator. On one hand, the combination of the pump flows can increase the work speed and on the other hand, the system allows smooth and simultaneous performance of all the operations, even while travel.

#### Regulation of hydraulic system based on engine speed

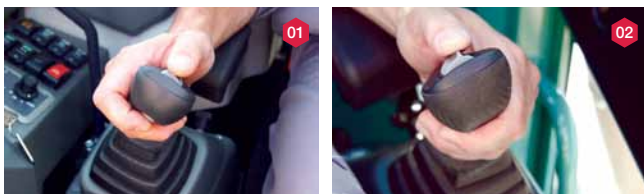
The new electronic hydraulic pump regulator adjusts its flow rate based on engine performance. Thus engine power is perfectly exploited and machine performance is optimized.

### FLEXIBILITY, ACCURACY AND VERSATILITY

#### Adjustable proportional control of the auxiliary circuits

The SV100-2 is equipped in standard with two auxiliary circuits with proportional control on joystick with adjustment

using potentiometers. The proportional control adapts the flow of oil to the use and the needs of each attachment. The operator thus has a perfect control of accessories (reclining buckets, brush cutters, hydraulic hammers ...).



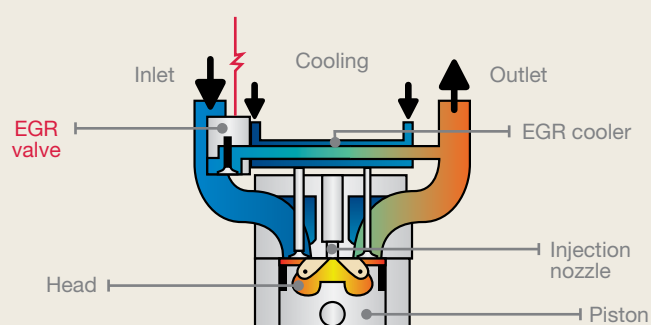
- 01 Right joystick : proportional control of the 1<sup>st</sup> auxiliary circuit (hammer).
- 02 Left joystick : proportional control of the 2<sup>nd</sup> auxiliary circuit (grapples, rotation).
- 03 Button at the bottom of the right joystick and red light : indicates the constant flow.
- 04 2 potentiometers enable to adjust the oil flow.

## NEW POWERFUL AND ENVIRONMENTALLY FRIENDLY YANMAR ENGINE

### Power and cleanliness

The SV100-2's new Yanmar diesel engine with direct injection has a net output of 51.7 kW (70.3 hp) and meets the Phase IIIB and Tier 4 emission standards. It is equipped with an electronic control unit and a common rail system that achieves an excellent power/consumption/noise ratio by electronic control of fuel injection.

A particulate filter traps particulate matter contained in exhaust gas and burns them during its automatic regeneration. Its operation without additives reduces maintenance costs.



### ELECTRICAL CONTROL SYSTEM EGR

The exhaust gas is partially cooled and mixed with the incoming air in order to lower the oxygen concentration in the intake air. This system lowers the combustion temperature and reduces emissions of nitrogen oxides (NOx) while boosting fuel efficiency.

### REDUCED FUEL CONSUMPTION

#### Auto-Idle

A self-deceleration mechanism (disconnectable) reduces engine speed when the SV100-2 does not work. When the control levers are not used for 4 seconds, the engine automatically drops to idle. When they are moved again, the engine returns to the previous speed. Environmental performance (noise and emissions) and fuel consumption are even more improved.

#### Eco Mode

The Eco mode effectively controls the motor speed, thus allowing a very low fuel consumption. Particularly useful when working require little power and low speed of movement (levelling a field using a ditching bucket ...), the Eco mode saves up to 17% less fuel, thereby reducing operating costs.



## COMFORT

Designed to meet the operator needs, the SV100-2 cab is large and pleasant. The attention paid to the work environment and ergonomics makes you feel comfortable during long days on site. The increased visibility and a comfortable operator station allow the operator to be even more productive while reducing fatigue.

### UNEQUALLED COMFORT FOR MORE EFFICIENCY

#### Large and comfortable cabin

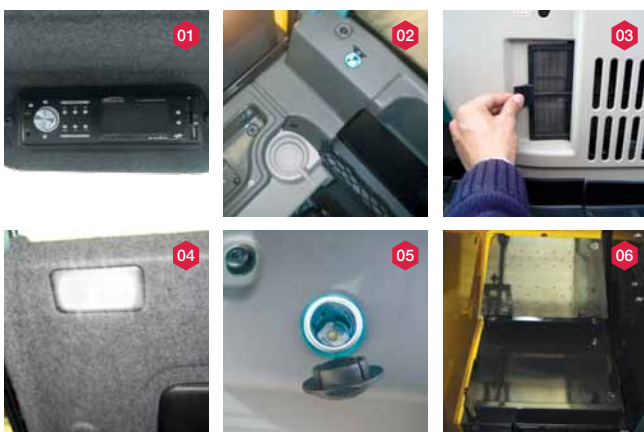
The SV100-2 cab interior is very spacious. The large legroom allows the operator to work comfortably for long hours. The entrance, which is also very large, provides easy cab access and exit.

#### Wide air suspension seat standard

The wide seat with headrest is fitted with a standard air suspension and can slide back and forth alone or simultaneously with the levers. It allows the operator to find an optimal working position depending on their size and girth while reducing shocks and vibrations.

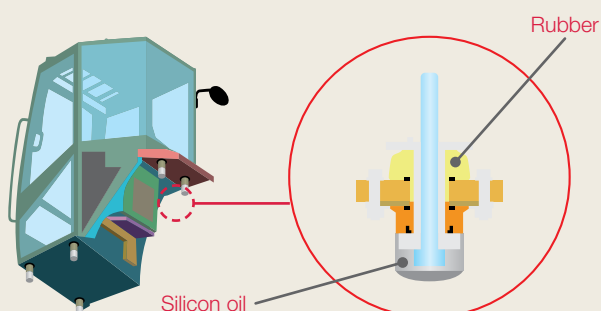
#### Improved air conditioning

The SV100-2 air conditioning can work at a comfortable temperature whatever the weather. Vents are placed so as to ensure a homogeneous temperature within the cabin. The air conditioning filter is inside the cabin and can be removed easily for cleaning or replacing. The defrost function ensures perfect demisting of the windscreen.



#### Standard equipments

- 01 Radio with USB port.
- 02 Numerous storage spaces and bottle holder.
- 03 Air conditioning filter.
- 04 Automatic ceiling.
- 05 Two 12-volt sockets.
- 06 Toolbox.



#### QUIET CABIN

The SV100-2 cab is mounted on an innovative and sophisticated silent block anti-vibration and noise-reduction system. The sound level reaching the operator is reduced (72 dB(A)). The 5 support points absorb even significant vibrations.



## MANY FEATURES FOR IMPROVED EASE OF CONTROL

### Perfect cockpit ergonomics

The architecture inside the SV100-2 cab has been studied to improve the operator driving position and to facilitate its work, particularly on the long and challenging work sites. The wrist supports are adjustable. The wide travel pedals and hydraulic control levers are fluid and easy to use. Ideally located, the control levers offer exceptional movement precision.

### Automatic 2<sup>nd</sup> speed

The SV100-2 has an automatic second speed for long displacements. A power switch keeps the machine in 1<sup>st</sup> gear for difficult passages (slope, counter-rotation, etc...).

### 360° visibility for safe and efficient work

The large SV100-2 cabin windows and shape of the hoods provide the operator with excellent visibility around the

machine. The front windshield, divided into two parts, is fully retractable and the windows on the right side slide. The operator can easily communicate with other workers. The 360° visibility ensures optimum safety on the work site and makes work more efficient. It also reduces the risk of damaging the machine, especially in tight spaces or congested job sites.

### Optimum visibility during loading operations

The front part of the roof is transparent and provides full control of the bucket to the operator during loading or demolition operations.

### A panoramic vision for a better control of the work environment

The SV100-2 is equipped with 5 rear and side mirrors. The operator can control the work area as well as the area around the machine without moving from his seat.



Because one is more effective in a safe and secure environment, the safety of the operator and people working around the machine is one of our priorities. The SV100-2 is equipped with many facilities that enable to work with confidence.



## SAFETY

### A WORKING ENVIRONMENT THAT IS BOTH PRACTICAL AND SECURE

#### Cabin conform to ISO standards

The SV100-2 cab has been designed to increase operator safety and confidence. The use of a very rigid ROPS and strong resistance for the cab enhances operator safety in a roll-over. The cabin also conforms to the FOPS I standard for protective structures against falling objects. It can optionally be equipped with a FOPS II guard.

#### LED lighting: efficiency and low consumption

In order to work efficiently and accurately in darkness, the SV100-2 comes standard with 3 LED lights positioned in the inner part of the boom and at the front of the cabin. The LED technology provides a powerful light while reducing energy consumption and increasing the life of the battery. An optional beacon and additional LED headlight can be added to the rear of the cab.



#### Additional Equipment

- 01 Safety lever to access the cockpit.
- 02 Seat belt with retractor.
- 03 Emergency engine stop.
- 04 Anchor points for transport.
- 05 Engine air cooling evacuation facing up (protection of people and the surrounding plants).
- 06 Evacuation hammer.

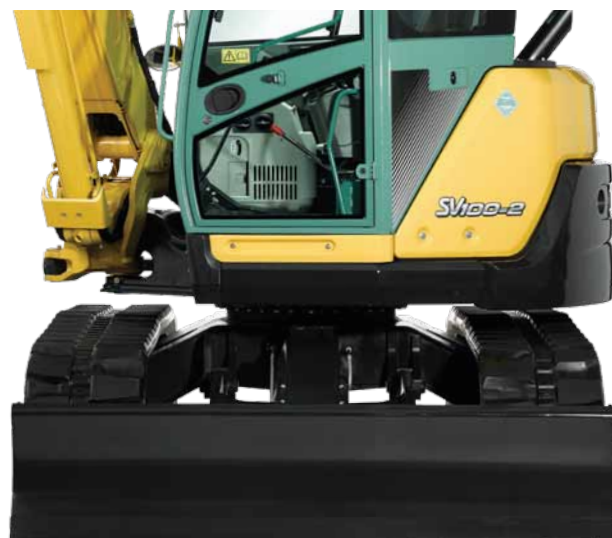




## RELIABILITY

### THE RELIABILITY NEEDED FOR IMPROVED PRODUCTIVITY AND REDUCED OPERATING COSTS

All SV100-2 components were designed in order to make it reliable, durable and capable of performing demanding work. The structure of the undercarriage, as well as the steel covers, provides fool proof resistance for the chassis. The hoses are protected with abrasion-resistant sleeves. Their routing on the top of the boom and on the right side of the machine is particularly thought through to avoid the risk of torsion. The blade and boom cylinders are fully protected by steel plates. Cataphoresis treatment of the steel parts provides excellent resistance to corrosion for the paint. Form stringers prevent the accumulation of soil and reduce the internal track wear.



### DIGITAL INTERFACE: FOR BETTER CONTROL OF THE MACHINE AND GREATER PRODUCTIVITY

The SV100-2 is equipped with a digital interface that informs the operator in real time on the status of his machine. Perfectly integrated into the right-hand console, the 3,3" screen provides excellent visibility in bright sunlight or at night. This interface allows you to manage working time, daily maintenance operations and to program interventions. It provides useful information on the operation of the machine, such as engine oil and coolant temperatures or fuel level and stores the important events. It also warns the operator in case of malfunctioning of the machine (insufficient battery charge, abnormal oil pressure, clogged air filter...).





## MAINTENANCE

### UNLIMITED ACCESS AND EASE OF MAINTENANCE TO REDUCE INSPECTION TIME AND MAINTENANCE

#### Easy cleaning

The SV100-2 is designed to minimize maintenance time of its various elements. The corrugated radiator wall is designed to prevent it from being crushed. The cabin carpet is easy to clean and air conditioning filter, positioned in the cabin, can be easily removed for cleaning or replacement.

#### Easy access

The rear and side covers are easy to open and have large openings for easy reach to daily check points. The engine elements as well as the hydraulic filter and the air filter are under the back cover. The right covers provide access to the radiator, battery, fuel tank and hydraulic filling points. The fan and air conditioner belts are easy to adjust. Inside the cabin, the panel beneath the seat and the removable floor make it very easy to access the relays, fuses and the components located under the cab.



- 01 Fan belt and alternator belt are accessible through a hatch to the right of the cabin.
- 02 Battery is protected by a metal plate behind the right back cover.
- 03 Electrical components are under the seat.
- 04 Access to the fuel tank and hydraulic filling points.

# YANMAR

## YANMAR SERVICES



Our distributors provide you all the solutions you need: advice tailored to your situation, including full-service contracts, spare parts and maintenance.

### > FINANCING

The **Y-Finance\*** solutions guarantee the most competitive interest rates and help you determine the financing plan that best suits your needs.

\* The offerings vary by country.

### > WARRANTY

All new Yanmar excavators sold through our authorized network in Europe are protected for 12 months (or 1,000 hours, whichever comes first) by a manufacturer's warranty with an extension of 12 months (or 1,000 hours) for the drive train. We go further by proposing extended warranty contracts "Garantie PLUS" that offer various solutions for long-term coverage.

### > PARTS

The original Yanmar parts are designed, tested and manufactured to ensure optimal quality and safety. By systematically using original spare parts, you can be sure to maintain the performance of your machine and avoid future costly repairs due to inadequate parts. You are sure that your machine is kept in perfect condition and you ensure a high resale value.

Original Yanmar parts can be delivered within 24 hours.

### > MAINTENANCE

Proximity, speed, quality and reliability are constant concerns for Yanmar dealers. We are committed to your peace of mind and we are committed to your satisfaction. The network of authorized Yanmar repair sites is present in all European countries. You can always find nearby mechanics trained and qualified to care for your machine. Authorized repairers provide contracts and routine maintenance services, perform emergency repairs and provide you with advice adapted to your needs.



# EQUIPMENT

## STANDARD EQUIPMENT

### Engine

- 4TNV98CT-VBV Yanmar diesel
- Meets Phase IIIB and Tier 4 standards
- Direct Injection
- Common Rail System
- EGR Electrical Control System
- Engine Control Unit (ECU)
- Particle filter with automatic regeneration (without additives)
- Water Separator
- Eco Mode
- Auto-Idle System (auto deceleration)
- Throttle using potentiometer

+

### Hydraulic system

- VIPPS Hydraulic system (ViO progressive 3 pump system)
- 2 auxiliary circuits with adjustable proportional control by potentiometer
- Electronic regulation of hydraulic pumps
- Automatic 2nd speed
- Filter on steering hydraulic circuit
- External hydraulic oil gauge

+

### Cabin

- LCD Interface
- Cabin mounted on viscoelastic silent blocks
- Air conditioning
- Adjustable and reclining seat with

fabric covers, air suspension and headrest

- Adjustable wrist support
- Foot rests
- Wide travel pedals
- Windshield with 2 fully retractable parts
- Sliding double right side window
- Transparent upper front part
- Visor
- Wipers
- Windshield washer
- Automatic ceiling lamp
- Radio with USB port
- 2 x 12V outlets
- Storage Boxes
- Secure document storage
- Cup Holder

+

### Undercarriage

- Asymmetric VICTAS tracks
- 4 anchor points
- Blade cylinder supply hose into two parts

+

### Safety

- Handrails
- Safety lever
- Seat belt with retractor
- Evacuation hammer
- Anchor points
- 5 mirrors
- Horn
- Travel beep

### Lighting

- 1 LED light integrated into the boom
- 2 LED lamps on the front of the cab

+

### Miscellaneous

- Electric refuelling pump with automatic stop
- Fuel gauge
- Double axis position of the arm cylinder
- Protection of the blade and boom cylinders
- Hoses protected by abrasion-resistant sleeves.
- Cataphoresis treated steel parts
- Locking Covers
- Toolbox
- Toolkit
- Grease pump

## OPTIONAL EQUIPMENT

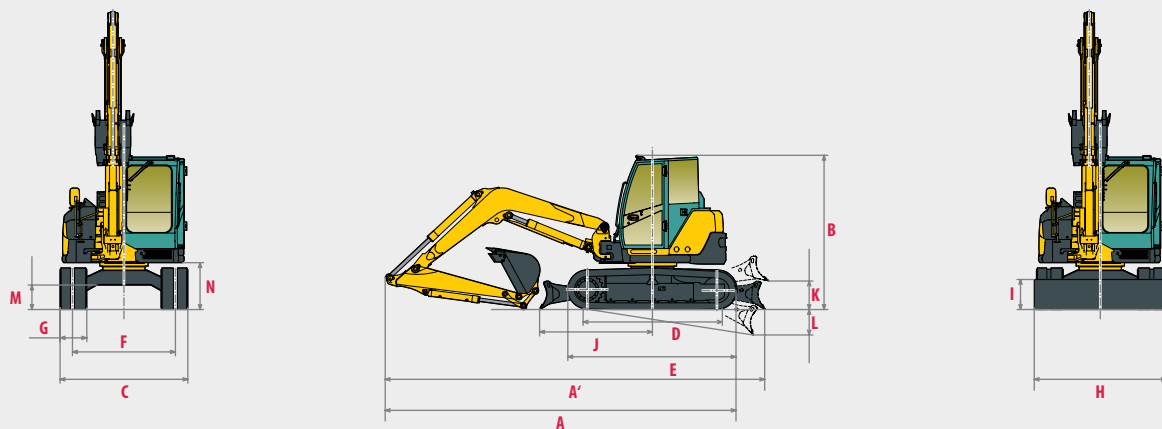
Special paint | Safety valves for lifting + overload warning | Proportional 3<sup>rd</sup> and 4<sup>th</sup> hydraulic circuits lines to arm end | Proportional 3<sup>rd</sup> and 4<sup>th</sup> hydraulic circuits (prolongation 3<sup>rd</sup> circuit included) + ½ circuit | Line high pressure for hydraulic quick coupler | Quick couplings | Anti-theft (key/keyboard) | GPS Tracking | Centralised greasing | Additional counterweight | Skaï seat | LED rear light + flashing light | FOPSII protection grid

## ACCESSORIES

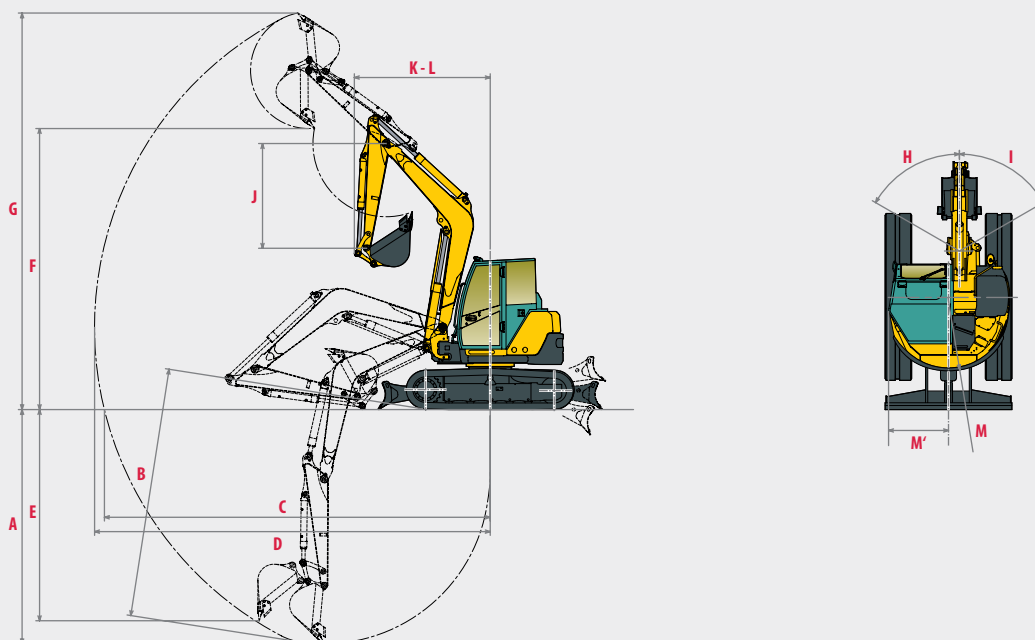
Yanmar gives you the accessories that fit your needs and match the safety standards in force in your country: mechanical quick coupler, hydraulic quick coupler, ditching bucket, swinging bucket, backhoe bucket, hydraulic hammer...



# DIMENSIONS



<b>A</b> » Overall length	6390 mm	<b>H</b> » Overall blade width	2320 mm
<b>A'</b> » Overall length with blade at the back	6900 mm	<b>I</b> » Overall blade height	520 mm
<b>B</b> » Overall height	2810 mm	<b>J</b> » Blade distance	2040 mm
<b>C</b> » Overall width	2320 mm	<b>K</b> » Max. lifting height above the ground	520 mm
<b>D</b> » Length of track on ground	2370 mm	<b>L</b> » Max. lowering depth from the ground	460 mm
<b>E</b> » Undercarriage length	3070 mm	<b>M</b> » Minimum ground clearance	450 mm
<b>F</b> » Lane	1870 mm	<b>N</b> » Ground clearance under counterweight	820 mm
<b>G</b> » Track width	485 mm		

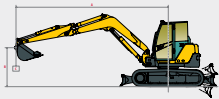


<b>A</b> » Max. digging depth - Blade lifted	4290 mm	<b>H</b> » Boom swinging base to left	60°
<b>B</b> » Max. digging depth - Blade lowered	4570 mm	<b>I</b> » Boom swinging base to right	60°
<b>C</b> » Max. digging reach on ground	7060 mm	<b>J</b> » Arm length	1950 mm
<b>D</b> » Max. digging reach	7240 mm	<b>K</b> » Front boom swing	2480 mm
<b>E</b> » Max vertical wall	3870 mm	<b>L</b> » Front turning radius with boom swing	2110 mm
<b>F</b> » Max. unloading height	5140 mm	<b>M</b> » Rear swing radius	1330 mm
<b>G</b> » Max. cutting height	7260 mm	<b>M'</b> » Rear swing radius with additional counterweight	1470 mm

■ Subject to technical modifications. Dimensions in mm with specific Yanmar bucket.



# LIFTING FORCE



Tipping load,  
rating over front



Tipping load,  
rating over side 90°

Standard counterweight, without rototilt

A	Blade on ground								Blade above ground							
	Max.	5 m	4 m	3 m	Max.	5 m	4 m	3 m	Max.	5 m	4 m	3 m				
B																
5 m	*1820	*1830	-	-	*1710	*1730	-	-	*1820	*1790	-	-	*1710	*1710	-	-
4 m	1380	*1800	*1780	*1790	*1820	*1810	-	-	1360	*1750	*1780	*1760	*1810	*1780	-	-
3 m	1200	*1830	1560	*1930	*2150	*2190	*2660	*2740	1150	1370	1560	*1890	*2170	*2180	*2640	*2690
2 m	1100	*1860	1480	*2150	2030	*2670	3150	*3840	1080	1260	1490	1760	2030	*2620	3080	*3810
1 m	1080	*1920	1430	*2370	1930	*3090	2920	*4470	1050	1230	1420	1690	1920	2320	2790	3410
0 m	1120	*1980	1370	*2470	1850	*3270	2790	*4590	1080	1240	1400	1650	1850	2230	2630	3280
-1 m	1210	*2030	1370	*2400	1820	*3160	2940	*4320	1220	1400	1380	1650	1830	2250	2780	3430
-2 m	1490	*1980	-	-	1870	*2880	2720	*3700	1420	1680	-	-	1710	2200	2750	*3750

Standard counterweight, with rototilt \*

A	Blade on ground								Blade above ground							
	Max.	5 m	4 m	3 m	Max.	5 m	4 m	3 m	Max.	5 m	4 m	3 m				
B																
5 m	*1570	*1570	-	-	*1470	*1470	-	-	*1570	*1570	-	-	*1470	*1470	-	-
4 m	1170	*1520	*1530	*1530	*1570	*1570	-	-	1150	*1520	*1530	*1530	*1570	*1570	-	-
3 m	990	*1580	1340	*1680	*1920	*1920	-	-	940	1160	1350	*1640	*1920	*1920	-	-
2 m	890	*1610	1270	*1900	1820	*2420	-	-	870	1060	1280	1550	1820	*2370	-	-
1 m	870	*1670	1220	*2120	1720	*2840	-	-	840	1020	1210	1480	1710	2110	-	-
0 m	910	*1730	1160	*2220	-	-	-	-	870	1030	1190	1440	-	-	-	-
-1 m	1000	*1780	1160	*2150	-	-	-	-	1010	1190	1170	1440	-	-	-	-
-2 m	1280	*1730	-	-	-	-	-	-	-	-	-	-	-	-	-	-

Additional counterweight, without rototilt

A	Blade on ground								Blade above ground							
	Max.	5 m	4 m	3 m	Max.	5 m	4 m	3 m	Max.	5 m	4 m	3 m				
B																
5 m	*1820	*1830	-	-	*1710	*1730	-	-	*1820	*1790	-	-	*1710	*1710	-	-
4 m	1530	*1800	*1780	*1790	*1820	*1810	-	-	1510	*1750	*1780	*1760	*1810	*1780	-	-
3 m	1330	*1830	1730	*1930	*2150	*2190	*2660	*2740	1290	1370	1730	*1890	*2170	*2180	*2640	*2690
2 m	1230	*1860	1650	*2150	2250	*2670	3490	*3840	1200	1260	1650	1960	2250	*2620	3410	*3810
1 m	1210	*1920	1600	*2370	2150	*3090	3250	*4470	1180	1230	1590	1890	2150	2580	3130	3820
0 m	1250	*1980	1540	*2470	2080	*3270	3120	*4590	1220	1240	1560	1840	2070	2500	2960	3700
-1 m	1360	*2030	1540	*2400	2200	*3160	3270	*4320	1360	1400	1550	1840	2060	2510	3110	3840
-2 m	1660	*1980	-	-	2090	*2880	3060	*3700	1590	1680	-	-	1940	2470	3090	*3750

Additional counterweight, with rototilt \*

A	Blade on ground								Blade above ground							
	Max.	5 m	4 m	3 m	Max.	5 m	4 m	3 m	Max.	5 m	4 m	3 m				
B																
5 m	*1570	*1570	-	-	*1470	*1470	-	-	*1570	*1570	-	-	*1470	*1470	-	-
4 m	1320	*1550	*1540	*1540	*1570	*1570	-	-	1300	*1500	*1540	*1540	*1570	*1570	-	-
3 m	1120	*1580	1520	*1680	*1930	*1930	-	-	1080	1160	1520	1640	*1930	*1930	-	-
2 m	1020	*1610	1440	*1900	2040	*2420	-	-	990	1050	1440	1750	2040	2370	-	-
1 m	1000	*1670	1390	*2120	1940	*2840	-	-	970	1020	1380	1680	1940	2370	-	-
0 m	1040	*1730	1330	*2220	-	-	-	-	1010	1030	1350	1630	-	-	-	-
-1 m	1150	*1780	1330	*2150	-	-	-	-	1150	1190	1330	1630	-	-	-	-
-2 m	-	-	-	-	-	-	-	-	-	-	-	-	-	-	-	-

\* Rototilt of 285 kg

The data in this table represents the lifting capacity in accordance with ISO 10567. They do not include the weight of the bucket and correspond to 75% of the maximum static tipping load or 87% of the hydraulic lifting capacity. Data marked with \* are the hydraulic limits of the lifting force.



# SPECIFICATIONS



## WEIGHT +/- 2% (CE STANDARDS)

	Weight	Ground pressure
Operating weight (rubber tracks)	9625 kg	0.381 kg/cm <sup>2</sup>
Transport weight (rubber tracks)	9550 kg	0.378 kg/cm <sup>2</sup>
With steel tracks	+ 50 kg	0.39 kg/cm <sup>2</sup>
With additional counterweight	+ 400 kg	0.396 kg/cm <sup>2</sup>
With FOPS II protection	+ 100 kg	0.385 kg/cm <sup>2</sup>



## ENGINE

Type	4TNV98CT-VBV
Fuel	Diesel
Net Power	51.7 kW / 70.3 HP / 2100 rpm
Gross Power	53.7 kW / 73 HP / 2100 rpm
Displacement	3318 cm <sup>3</sup>
Maximum torque	283 N.m. / 1365 rpm
Cooling	Liquid
Starter	3 kW
Battery	12 V - 115 Ah
Alternator	12 V - 80 A



## HYDRAULIC SYSTEM

Maximum pressure	245 bar
1 double piston pump with variable flow	2 x 77.7 l/min
1 gear pump	53.2 l/min
1 gear pump for pilot line	20 l/min

PTO	Theoretical data at 2100 rpm	
	Pressure	Oil flow
	0 ~ 220 bar	130 ~ 60 l/min
	0 ~ 220 bar	130 ~ 60 l/min



Oil flow decreases as the pressure increases



## PERFORMANCE

Travel speed	2.5 / 4.4 km/h (2.2 / 4.0 km/h with rubber crawlers)
Rotation speed	9.1 rpm
Digging force (arm)	45.8 kN (4670 kgf)
Digging force (bucket)	68.5 kN (6980 kgf)
Traction force	91.6 kN
Grade ability	30°
Noise level (2000/14/CE & 2005/88/CE)	72 dB(A) / 101 dB(A) (LwA)



## UNDERCARRIAGE

Number of top rollers	1
Number of bottom rollers	5
Track tensioning system	Using grease pump



## CAPACITIES

Fuel tank	115 l
Coolant	10.6 l
Engine oil	11.2 l
Hydraulic circuit	115 l
Hydraulic tank	60 l

## MAINTENANCE FREQUENCY

Change engine oil and filter: **250 hours** | Change fuel filter: **500 hours** | Change hydraulic oil filter: **1000 hours** |  
 Change hydraulic oil filter: **1000 hours** | Change cooling fluid: **1000 hours** | Clean particulate filter: **3000 hours** |  
 Change particle filter: **9000 hours**



**Архангельск** (8182)63-90-72  
**Астана** (7172)727-132  
**Астрахань** (8512)99-46-04  
**Барнаул** (3852)73-04-60  
**Белгород** (4722)40-23-64  
**Брянск** (4832)59-03-52  
**Владивосток** (423)249-28-31  
**Волгоград** (844)278-03-48  
**Вологда** (8172)26-41-59  
**Воронеж** (473)204-51-73  
**Екатеринбург** (343)384-55-89  
**Иваново** (4932)77-34-06

**Ижевск** (3412)26-03-58  
**Иркутск** (395)279-98-46  
**Казань** (843)206-01-48  
**Калининград** (4012)72-03-81  
**Калуга** (4842)92-23-67  
**Кемерово** (3842)65-04-62  
**Киров** (8332)68-02-04  
**Краснодар** (861)203-40-90  
**Красноярск** (391)204-63-61  
**Курск** (4712)77-13-04  
**Липецк** (4742)52-20-81

**Киргизия** (996)312-96-26-47

**Магнитогорск** (3519)55-03-13  
**Москва** (495)268-04-70  
**Мурманск** (8152)59-64-93  
**Набережные Челны** (8552)20-53-41  
**Нижний Новгород** (831)429-08-12  
**Новокузнецк** (3843)20-46-81  
**Новосибирск** (383)227-86-73  
**Омск** (3812)21-46-40  
**Орел** (4862)44-53-42  
**Оренбург** (3532)37-68-04  
**Пенза** (8412)22-31-16

**Россия** (495)268-04-70

**Пермь** (342)205-81-47  
**Ростов-на-Дону** (863)308-18-15  
**Рязань** (4912)46-61-64  
**Самара** (846)206-03-16  
**Санкт-Петербург** (812)309-46-40  
**Саратов** (845)249-38-78  
**Севастополь** (8692)22-31-93  
**Симферополь** (3652)67-13-56  
**Смоленск** (4812)29-41-54  
**Сочи** (862)225-72-31  
**Ставрополь** (8652)20-65-13

**Казахстан** (772)734-952-31

**Сургут** (3462)77-98-35  
**Тверь** (4822)63-31-35  
**Томск** (3822)98-41-53  
**Тула** (4872)74-02-29  
**Тюмень** (3452)66-21-18  
**Ульяновск** (8422)24-23-59  
**Уфа** (347)229-48-12  
**Хабаровск** (4212)92-98-04  
**Челябинск** (351)202-03-61  
**Череповец** (8202)49-02-64  
**Ярославль** (4852)69-52-93